



The next generation in marine electronics



2010  
product catalog

# Condor<sup>®</sup> F-238

## High performance fishfinding has never been so affordable

The brand new **Condor F-238** raises the bar in terms of its quality-to-price ratio for a compact fishfinder. With its fast new processor and high-sensitivity receiver, this unit boasts performance that has previously been available only with much more expensive fishfinders.

The advanced autorange function of **Condor F-238** frees fishermen of the need to worry about range adjustment. Now you can focus entirely on fishing. All suspended targets, especially fish, are automatically displayed by this unit's sophisticated identification software, and appear on the screen as fish icons, with a digital readout of their depth. The high-tech, very sensitive receiver, with its advanced automatic gain-control system, offers surprisingly good depth performance.

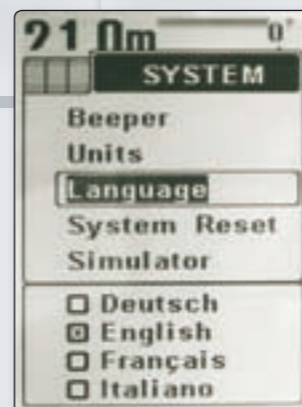
The new software, with its convenient four-tab menu, is as easy to use as the rest of our models, in keeping with our reputation for user-friendly equipment. Each of the four on-screen windows clearly displays the appropriate settings; adjustments can be made with the arrow keys and can be monitored on a horizontal graphic bar. Thus, the intuitive nature of the control system of **Condor F-238** is further enhanced, setting standards never before attained in this class of fishfinders.

Adjustments and settings are permanently stored in the unit's memory, even when the **Condor F-238** is off. Whenever you turn the unit on, you will find the settings from the last session.

The large 4.3" screen provides perfect visibility at any angle and in all lighting conditions - even with polarized sunglasses. The cold cathode backlighting is fully dimmable, for ideal ease of nighttime viewing.

The transom-mount transducer, included as part of the package, possesses a special hydrodynamic profile and works perfectly at high boating speeds as well. The built-in temp sensor makes it possible to continuously monitor a water-surface temperature readout on the screen.

The compact housing of **Condor F-238** easily fits into any dash board. The flexible mounting bracket allows it to be tilted and swiveled in any direction, while its single jack makes it possible to install and remove the unit quickly and conveniently.



The handy menu system, with its intuitive 4-tab interface, allows users to easily and rapidly access all the advanced functions of F-238. These menus can be displayed in any of 4 available languages.

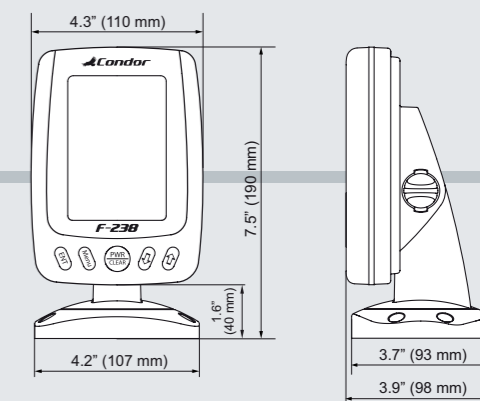


## F-238 200 kHz Fishfinder

- Large, high-contrast, 4.3" triple supertwist LCD screen
- High resolution 240 x 128 pixel with 4 levels of gray
- Operation frequency: 200 kHz
- Output power: 1200W (peak, 150W RMS)
- Depth capability of over 490 ft (150 m)\*
- Sophisticated fish-recognition software that shows suspended targets, such as fish, on the screen as symbols with a digital depth readout
- Large easy-to-read digital depth, temperature, and voltage readouts
- Automatic range control
- InstanTrack™ shows in a column at right the instantaneous sonar returns in the form of signal-strength indicator bars
- Alarms: shallow water, fish, low battery
- Dual-function gray Shadeline™ bottom display, providing useful information about the nature of the water bottom
- High-intensity, fully dimmable backlighting for night use
- Adjustable chart speed
- Stable memory retains all settings, even when the unit is turned off
- Hydrodynamic transom-mount transducer, with built-in temp probe, standard feature, and suitable for high boating speed
- Coverage angle 20° @ -3dB (90° for fish searching)
- Outstanding depth performance, thanks to the high-sensitivity receiver, capable of revealing even the weakest echo signals from the column of water below the boat
- Single-plug connector, for fast installation and removal
- Compact housing fits any type of dash, allowing easy mounting in any location
- Tilting and swiveling base is a standard feature, allowing the fisherman to orient the unit at any angle and in any direction
- Menus in 4 selectable languages
- Operating voltage: 12 V
- Dimensions: 7.5" x 4.3" x 3.9" (190 x 110 x 98 mm)

## A high-tech fishfinder at an incredible price

A genuine breakthrough in fishfinder price-to-value ratio



\* Normally, fishfinders will show deeper readings in fresh water than in salt water. Actual depth capability depends on: 1) Transducer installation, 2) Plankton, 3) Salinity. In salt water, air bubbles and zooplankton are the two most important factors affecting performance, and can change from day to day. Also rotting plants, producing as much as 2 feet of muck, affects the performance of any fishfinder.

# Condor<sup>®</sup> F-240



## F-240 200 kHz Fishfinder

### Superior technology and screen quality

A crisp and brilliant high-resolution screen, along with sophisticated software and a high sensitivity receiver

### Highest quality screen and advanced technology in a compact and affordable 200 kHz fishfinder

The **Condor F-240** represents a new goal in Condor fishfinding technology. Its technically sophisticated high-sensitivity receiver can detect even the weakest echoes bounced off targets located under your boat, providing excellent depth performance.

The sophisticated identification software of **Condor F-240** displays suspended targets, such as fish, on the high resolution screen. The targets appear as fish icons, along with a digital readout of their depth. The convenient autorange function frees users from the need to monitor its operation, allowing a fisherman to focus on fishing.

Convenient, easy-to-use menus make it simple to use the **Condor F-240**; you will enjoy quick access to all the most advanced functions. All settings are stored in the unit's memory even when you turn it off: turn it back on and your fishfinder is already set up the way you want.

The large, high-contrast, 4.5" screen of **Condor F-240** remains perfectly viewable in all light conditions and at any angle, even when you're wearing polarized sunglasses. The high-quality cold cathode backlighting system, usually found only in much more expensive fishfinders, ensures perfect visibility in dim light or at night.

The standard transom-mount transducer features a special hydrodynamic profile; it also includes a built-in temp sensor. It provides excellent performance at even the highest boating speeds, and offers a wide fish-searching cone angle, up to 90°.

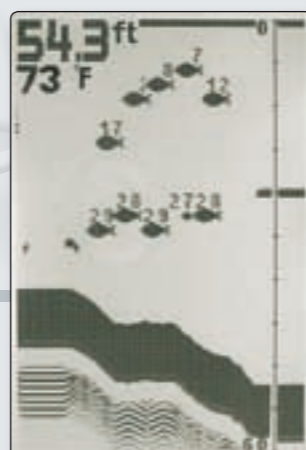
This compact unit fits comfortably onto any dashboard, while the single plug makes it possible to install or remove the **Condor F-240** in a matter of seconds.



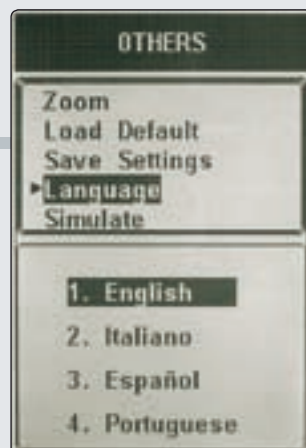
- Large, high contrast, 4.5" triple supertwist LCD screen
- High resolution 240 x 160 pixel with 16 levels of gray
- Operation frequency: 200 kHz
- Output power: 1200W (peak, 150W RMS)
- Depth capability of over 490 ft (150 m)\*
- Sophisticated fish-recognition software that shows suspended targets, such as fish, on the screen as symbols with a digital depth readout
- Large easy-to-read digital depth and temperature readouts
- Automatic range control
- InstanTrack™ shows in a column at right the instantaneous sonar returns in the form of signal-strength indicator bars
- Alarms: shallow water, fish, low battery
- Dual-function gray Shadeline™ bottom display, providing useful information about the nature of the water bottom
- Salt-water/fresh-water selection function, which automatically sets all parameters to appropriate water type
- High intensity backlighting for night use
- Adjustable chart speed
- Stable memory retains all settings, even when the unit is turned off
- Hydrodynamic transom-mount transducer, with built-in temp probe, standard feature, and suitable for high boating speed
- Coverage angle 20° @ -3dB (90° for fish searching)
- Outstanding depth performance, thanks to the high-sensitivity receiver, capable of revealing even the weakest echo signals from the column of water below the boat
- Single-plug connector, for fast installation and removal
- Compact housing fits any type of dash, allowing easy mounting in any location
- Tilting and swiveling base is a standard feature, allowing the fisherman to orient the unit at any angle and in any direction
- Multilingual menus with a choice of 16 languages
- Operation voltage: 12 V
- Dimensions: 7.5" x 4.3" x 3.9" (190 x 110 x 98 mm)

*With its sophisticated identification software, the F-240 identifies any suspended targets, such as fish, displaying them as on-screen fish icons, accompanied by a digital depth readout.*

*Experienced users may choose to disable this feature at will, opting for on-screen displays of raw echo returns, along with such significant details as thermoclines, baitfish, and fish movements.*



*A convenient menu system, with its intuitive two-window interface, allows the user to easily and rapidly access all the F-240's most advanced functions. These menus can be displayed in any of 16 selectable languages in the unit's memory.*



*All Condor fishfinders come complete with all necessary accessories: transom-mount transducer, incorporated power cord, tilting and swiveling base, and hardware.*

\* Normally, fishfinders will show deeper readings in fresh water than in salt water. Actual depth capability depends on: 1) Transducer installation, 2) Plankton, 3) Salinity. In salt water, air bubbles and zooplankton are the two most important factors affecting performance, and can change from day to day. Also rotting plants, producing as much as 2 feet of muck, affects the performance of any fishfinder.

# Condor<sup>®</sup> F-247 df

## A true 50/200 kHz dual frequency fishfinder at an incredibly low price

The **Condor F-247 df** sets new standards in compact fishfinder performance. Its powerful dual-frequency 50/200 kHz electronics, in combination with the high-sensitivity receiver, allow depth performance never before seen in such an affordable fishfinder.

The large, high-contrast, high-resolution screen of the **Condor F-247 df** shows any suspended targets in the underwater column with the greatest detail, and is perfectly viewable at any angle, even when wearing polarized sunglasses. The cold-cathode screen backlighting, typical of much more expensive fishfinders, guarantees perfect viewing in all lighting conditions and for night use.

The advanced identification software of **Condor F-247 df** provides an onscreen display of suspended targets, such as fish, in the form of fish icons with digital indication of each icon's depth.

The Shadeline™ feature provides relevant information about the nature of the bottom and other structures, while a convenient autorange function lets fishermen forget about the unit and focus on their fishing.

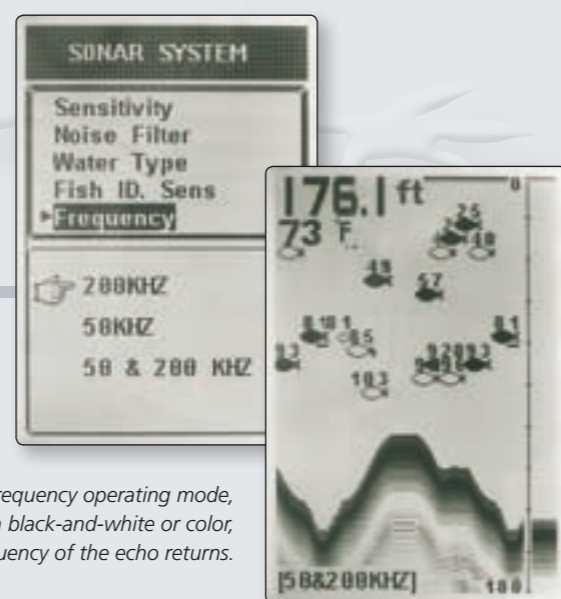
A convenient menu system makes using the **Condor F-247 df** very simple, providing quick access to all its advanced functions. These menus can be displayed in any of the 16 selectable languages available. A permanent internal memory preserves all settings even when the unit is turned off. When you turn your **Condor F-247 df** back on, all your favorite settings will still be there.

The **Condor F-247 df** fits nicely onto any dash thanks to its compact housing, while the standard tilting and swiveling base allows it to be easily oriented in any direction for the most convenient use.

The standard transom-mount dual-frequency hydrodynamic-profile transducer is easy to install and gives optimal performance even at high boating speeds. It has a wide cone angle, ideal for fishfinding, and a built-in temp sensor that provides precise surface water temperature readouts.

The F-247 df dual-frequency electronics allows the user to choose among three different operating modes, 200 kHz, 50 kHz, and interlaced 50/200 kHz

When set for 50/200 kHz interlaced dual-frequency operating mode, the fish symbols appear on-screen in black-and-white or color, according to the frequency of the echo returns.



## F-247 df 50/200 kHz Fishfinder

## All the depth capability advantages of 50/200 kHz dual-frequency operation

Outstanding depth performance, advanced functions, and a large brilliant screen, all packed in a compact high-tech fishfinder

- Large, high contrast, 4.5" triple supertwist LCD screen
- High resolution 240 x 160 pixel with 16 levels of grey
- Operation frequency: 50/200 kHz
- Output power: 1200W (peak, 150W RMS)
- Depth capability of over 920 ft (280 m)\*
- Sophisticated fish-recognition software that shows suspended targets, such as fish, on the screen as symbols with a digital depth readout
- Large easy-to-read digital depth and temperature readouts
- Automatic range control
- InstanTrack™ shows in a column at right the instantaneous sonar returns in the form of signal-strength indicator bars
- Alarms: shallow water, fish, low batteries
- Dual-function gray Shadeline™ bottom display, providing useful information about the nature of the water bottom
- Salt-water/fresh-water selection function, which automatically sets all parameters to appropriate water type
- High-intensity backlighting for night use
- Adjustable chart speed
- Stable memory retains all settings, even when the unit is turned off
- Hydrodynamic transom-mount transducer, with built-in temp probe, standard feature, and suitable for high boating speed
- Coverage angle 20° @ -3dB (90° for fish searching)
- Outstanding depth performance, thanks to the high-sensitivity receiver, capable of revealing even the weakest echo signals from the column of water below the boat
- High-quality single-plug connector, with quick-release system, for rapid mounting and removal
- Compact housing fits any type of dash, allowing easy mounting in any location
- Tilting and swiveling base, standard feature, allows you to orient the unit at any angle and in any direction
- Multilingual menus with a choice of 16 languages
- Operation voltage: 12 V
- Dimensions: 7.5" x 4.3" x 3.9" (190 x 110 x 98 mm)



\* Normally, fishfinders will show deeper readings in fresh water than in salt water. Actual depth capability depends on: 1) Transducer installation, 2) Plankton, 3) Salinity. In salt water, air bubbles and zooplankton are the two most important factors affecting performance, and can change from day to day. Also rotting plants, producing as much as 2 feet of muck, affects the performance of any fishfinder.

[www.condorsonar.com](http://www.condorsonar.com)

Condor Marine was founded by a group of technicians who can boast 20 years of expertise in the world of fishfinders. We at Condor see things from the fisherman's point of view. Every single feature in our fishfinders is designed to ensure genuine, meaningful benefits for anglers in real-life fishing conditions. That's why Condor fishfinders claim their best performance where it matters most... on the water.

**Condor: the easiest way to enjoy fishing.**



**Condor** Marine

1501 Minnesota Avenue  
Winter Park, FL 32790 U.S.A.

[info@condorsonar.com](mailto:info@condorsonar.com)  
[www.condorsonar.com](http://www.condorsonar.com)